

DFM

Genel Özellikler / General Specifications

Ölçü / Dimensions: 2 1/2" - 8"/DN65 - DN200

Anma Basıncı / Nominal Pressure: 500 psi (35,0 bar)

Çalışma Sıcaklığı / Working Temperature: -20°C/+80°C

Standartlar / Standards

Sertifikalar / Certificate: FM

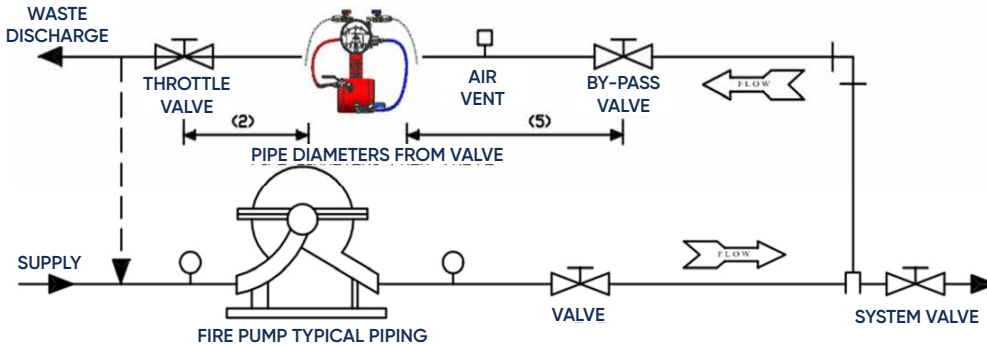


Pompa sistemlerinin belirli periyotlarla istenilen debiyi geçirip geçirmediği kontrol edilmesi için kullanılır. Debi ölçer genellikle pompa basma hatlarında çek valf ile OS&Y vana arasına montaj edilir. Debi ölçer çapı pompa debisine göre belirlenmektedir.

It is used for periodical control of the pump systems whether the desired flow rate is achieved. The flow meter is usually mounted between check valve and OS&Y valve in pump discharge lines. The diameter of the flowmeter is determined by the pump flow.



Montaj Detayı / Assembly Detail



Line Size	Pump GPM	Metre Range Min ve Max GPM	Pump LPM	Meter Range Min ve Max LPM	Model Number Grooved	Model Number Butt weld
2"	50	25-100	190	95-379	DMF-2-50-G	DFM-2-50-B
2-1/2"	100	50-200	379	189-757	DFM-2.5-100-G	DFM-2.5-100-B
3"	150	75-300	568	284-1136	DFM-3-150-G	DFM-3-150-B
3"	200	100-400	757	379-1514	DFM-3-200-G	DFM-3-200-B
4"	250	125-500	946	473-1893	DFM-4-250-G	DFM-4-250-B
4"	300	150-600	1136	568-2271	DFM-4-300-G	DFM-4-300-B
4"	400	200-800	1514	757-3028	DFM-4-400-G	DFM-4-400-B
4"	450	225-900	1704	852-3407	DFM-4-450-G	DFM-4-450-B
5"	450	225-900	1704	852-3407	DFM-5-450-G	DFM-5-450-B
5"	500	250-1000	1892	946-3785	DFM-5-500-G	DFM-5-500-B
5"	750	375-1500	2836	1420-5678	DFM-5-750-G	DFM-5-750-B
6"	500	250-1000	1893	946-3785	DFM-6-500-G	DFM-6-500-B
6"	750	375-1500	2836	1420-5678	DFM-6-750-G	DFM-6-750-B
6"	1000	500-2000	3785	1893-7570	DFM-6-1000-G	DFM-6-1000-B
*6"	1250	625-2500	4731	2365-9463	DFM-6-1250-G	DFM-6-1250-B
8"	1000	500-2000	3785	1893-7570	DFM-8-1000-G	DFM-8-1000-B
8"	1250	625-2000	4730	2365-7570	DFM-8-1250-G	DFM-8-1250-B

*DN 150 1250 GPM için FM belgesi mevcuttur. / FM certificate is available for DN 150 1250 GPM.