

OpenAir™

Air damper actuators

GLB..1E



Electromotive rotary actuators for 2-position, 3-position, modulating control and modulating control



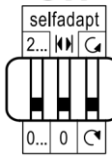
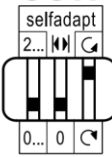
- Nominal torque 10 Nm
- Operating voltage AC 24 V ~ / DC 24...48 V =
- Mechanically adjustable span between 0. 90°
- Pre-wired with standard 0.9 m connection cables
- Type-specific variations with adjustable offset and span for the positioning signal
- Position indication: Mechanical and electrical
- Feedback potentiometer
- Self-adaption of the rotation angle range and adjustable auxiliary switches for supplemental functions

Application

Rotary actuators are used in ventilation and air conditioning plants to regulate air dampers and throttle air flow:

- For damper areas up to ca. 1.6 m², friction-dependent.
- Suitable for use with 2-position and 3-position controllers as well as modulating controllers (DC 0/2...10 V) to control air dampers or air throttles.
- We recommend a minimum pulse length of 500 ms on rotary actuators operated with 3-point control to ensure continuous and accurate operation.

Functions

GLB..	AC 24 V ~ / DC 24...48 V –	141.1E / 142.1E / 146.1E	161.1E / 163.1E / 164.1E / 166.1E
	AC 100...240 V ~	341.1E / 346.1E	361.1E
Control type	2-position/3-position		Modulating control (0/2...10 V)
Rotary direction	<p>Clockwise or counterclockwise direction depends...</p> <ul style="list-style-type: none"> • ... on the type of control; • ... on the rotation direction switch: <div style="display: flex; justify-content: space-around; align-items: center;"> <div style="text-align: center;"> <p>CW</p>  </div> <div style="text-align: center;"> <p>CCW</p>  </div> </div> <p>The actuator remains in the respective position with no power applied.</p>		
		<ul style="list-style-type: none"> • ... On the DIL switch setting Clockwise / Counterclockwise <div style="display: flex; justify-content: space-around; align-items: center;"> <div style="text-align: center;"> <p>CW</p>  </div> <div style="text-align: center;"> <p>CCW</p>  </div> </div> <ul style="list-style-type: none"> • ... on the positioning signal. <p>The actuator remains in the deployed position:</p> <ul style="list-style-type: none"> • ... if the positioning signal is maintained at a constant value; • ... in the event of power loss. 	
Position indication	mechanical	Rotation angle position indication using a position indicator.	
	electrical	Connecting the feedback potentiometer to an external voltage source results in voltage supply proportional to the rotation angle.	Position indicator: Output voltage U = DC 0/2...10 V is generated proportional to rotation angle. The direction of action (inverted or non-inverted) for output voltage U is based on the DIL switch position.
Auxiliary switch	The switching points for auxiliary switches A and B can be set mutually independent in 5° increments from 0 to 90°.		
The rotation angle range is self-adapting	-	The actuator automatically determines the mechanical end positions of the rotation angle range. The characteristic function (U ₀ , ΔU) is mapped to the calculated rotation angle range.	
Manual adjustment	The actuator can be manually adjusted by pressing the gear train disengagement button.		
Rotation angle limitation	A set screw can limit the rotary angle to between 0° and 90°.		

Housing

The housing is made of fiberglass reinforced plastic:

- Flame retardant
- Non-brominated
- Non-chlorinated.

Actuator / gears

- Brushless, robust DC motors ensure reliable operation regardless of load. The damper actuators do not require an end position switch, are overload proof, and remain in place upon reaching the end stop.
- The gears are maintenance free and low noise.

Type summary

Type	Stock number	Control	Operating voltage	Positioning signal input Y	Position indicator U = DC 0...10 V =	Feedback potentiometer 5kΩ	Self-adapting Rotational angle area	Auxiliary switch	Rotation switch
GLB141.1E	S55499-D192	2 or 3-position	AC 24 V ~ / DC 24...48 V =	-	-	-	-	-	yes
GLB142.1E	S55499-D193					yes			
GLB146.1E	S55499-D194					-		2	
GLB341.1E	S55499-D195		AC 100...240 V ~			-			
GLB346.1E	S55499-D196					2			
GLB161.1E	S55499-D270	Modulating	AC 24 V ~ / DC 24...48 V =	DC 0/2...10 V =	yes	-	yes	-	yes
GLB163.1E	S55499-D271			DC 0...35 V =					
GLB164.1E	S55499-D272			DC 0/2...10 V =				2	
GLB166.1E	S55499-D273								
GLB361.1E	S55499-D197		AC 100...240 V ~	-					
Nominal torque		10 Nm (applies to all)							

Accessories / spare parts

See data sheet N4698:



<https://sid.siemens.com/v/u/A6V10405972>

Product documentation

Topic	Title	Document ID
Data sheet	Air damper actuators	A6V10636202
Mounting instructions	GDB..1E, GLB..1E	A5W00005997

Related documents such as the environmental declarations, declarations of conformity, etc., can be downloaded from the following Internet address:

www.siemens.com/bt/download

Notes

Safety

CAUTION



National safety regulations

Failure to comply with national safety regulations may result in personal injury and property damage.

- Observe national provisions and comply with the appropriate safety regulations.
- Mounting, commissioning, and service by properly trained personnel only.

Engineering

Auxiliary switch and potentiometer

Cannot be integrated after the fact.

Installation

WARNING



No internal line protection for supply lines to external consumers

Risk of fire and injury due to short-circuits!

- Adapt the wire cross sections as per local regulations to the rated value of the installed fuse.

Maintenance

Actuators GLB..1E are maintenance free.

Disposal



The device is considered an electronics device for disposal in terms of European Directive 2012/19/EU and may not be disposed of as domestic garbage.

- Use only designated channels for disposing the devices.
- Comply with all local and currently applicable laws and regulations.

Supply voltage GLB1..1E			
Operating voltage (SELV/PELV)		AC 24 V ~ ±20 % (19.2...28.8 V ~) DC 24...48 V = ±20 % (19.2...57.6 V =) ¹⁾	
Frequency		50/60 Hz	
Power consumption	Operation	GLB14..1E	1,3 VA / 0,8 W
		GLB16..1E	1,5 VA / 1,0 W
	Hold	GLB14..1E	0,7 VA / 0,4 W
		GLB16..1E	0,9 VA / 0,6 W

Supply voltage GLB3..1E			
Operating voltage (SELV/PELV)		AC 100...240 V ~ ±10 % (90...264 V ~)	
Frequency		50/60 Hz	
Power consumption	Operation	GLB34..1E	6,0 VA / 2,0 W
		GLB36..1E	4,0 VA / 1,5 W
	Hold	GLB34..1E	0,9 W
		GLB36..1E	0,6 W

Operating data	
Nominal torque	10 Nm
Maximum torque (when blocked)	16 Nm
	Maximum holding torque
Nominal rotation angle (with position indication)	90°
Maximum rotation angle (mechanically limited)	95° ±2°
Runtime at nominal rotation angle 90°	150 s
Sound pressure level: Actuator	28 dB(A)

Inputs			
Positioning signal for GLB14..1E			
	Operating voltage AC 24 V ~ / DC 24...48 V =	wires 1-6/G-Y1	Clockwise
		wires 1-7/G-Y2	Counterclockwise
Positioning signal for GLB34..1E			
	Operating voltage AC 100...240 V~	wires 4-6/N-Y1	Clockwise
		wires 4-7/N-Y2	Counterclockwise
Positioning signal for GLB16..1E			
	Input voltage	wires 8-2/Y-G0	DC 0/2...10 V =
	Power consumption		0.1mA
	Input resistance		≥100 kΩ
Max. permissible input voltage			DC 35 V = limited internally to DC 10 V =
	Protected against incorrect wiring		max. AC 24 V ~ / DC 24...48 V =
Hysteresis	for non-adjustable characteristic function		60 mV
	for adjustable characteristic function		0.6 % of ΔU
Adjustable characteristic function (GLB163.1E, GLB164.1E)			
	Adjustable with 2 potentiometers:	Offset U ₀	DC 0...5 V =
		Workspace ΔU	DC 2...30 V =
	Max. input voltage		DC 35 V =
	Protected against incorrect wiring		max. AC 24 V ~ / DC 24...48 V =

Outputs			
Position indicator			
	Output signal GLB16..1E	wires 9-2/U-G0	
	Output signal GLB36..1E	wires 9-2/U-G-	
	Output voltage U		DC 0...10 V =
	Max. output current		DC ±1 mA
	Protected against incorrect wiring		max. AC 24 V ~ / DC 24...48 V =
Aux. power supply (G-/G+)		GLB36..1E	DC 24 V = ±20 %, max. 10 mA
Feedback potentiometer (for GLB142.1E)			
	Change in resistance	wires P1-P2	0...5000 Ω
	Load		<0.25 W
	Max. loop current		<10 mA
	Permissible voltage at potentiometer (SELV/PELV)		AC 24 V ~ / DC 24...48 V =
	Insulation resistance between potentiometer and housing		AC 500 V ~

Mechanical life	
Full cycles	100'000
Partial cycles	5'000'000

Auxiliary switches (GLB146.1E, GLB166.1E, GLB346.1E)		
Switching voltage	AC 24..250 V ~ / DC 12...30 V =	
Contact loading	6 A resistive, 2 A inductive, min. 10 mA @ AC 4 A resistive, 2 A inductive, min. 10 mA @ DC 30 V = 0.8 A resistive, 0.5 A inductive, min. 10 mA @ DC 60 V =	
Electric strength auxiliary switch against housing	AC 4 kV	
Switching range for auxiliary switches	5...90°	
	Setting increments	5°
Factory setting	Switch A	5°
	Switch B	85°

Connection cable	
Cable length	0,9 m
Cable cross-section	0,75 mm ²
Permissible length for signal wires	300 m

Safety class and degree of protection		
Protection class	EN 60730	
	AC 24 V / DC 24...48, feedback potentiometer	III
	AC 100...240 V, auxiliary switch	II
Degree of protection of housing	IP54 per EN 60529	

Environmental conditions									
Operation	IEC 60721-3-3								
<table border="1"> <tr> <td>Climatic conditions</td> <td>Class 3K5</td> </tr> <tr> <td>Mounting location</td> <td>Interior, weather-protected</td> </tr> <tr> <td>Temperature (extended)</td> <td>-32...55 °C</td> </tr> <tr> <td>Humidity, non-condensing</td> <td><95 % r.h.</td> </tr> </table>	Climatic conditions	Class 3K5	Mounting location	Interior, weather-protected	Temperature (extended)	-32...55 °C	Humidity, non-condensing	<95 % r.h.	
	Climatic conditions	Class 3K5							
	Mounting location	Interior, weather-protected							
	Temperature (extended)	-32...55 °C							
Humidity, non-condensing	<95 % r.h.								
Transportation	IEC 60721-3-2								
<table border="1"> <tr> <td>Climatic conditions</td> <td>Class 2K3</td> </tr> <tr> <td>Temperature (extended)</td> <td>-32...70 °C</td> </tr> <tr> <td>Humidity, non-condensing</td> <td><95 % r.h.</td> </tr> </table>	Climatic conditions	Class 2K3	Temperature (extended)	-32...70 °C	Humidity, non-condensing	<95 % r.h.			
	Climatic conditions	Class 2K3							
	Temperature (extended)	-32...70 °C							
Humidity, non-condensing	<95 % r.h.								
Storage	IEC 60721-3-1								
<table border="1"> <tr> <td>Climatic conditions</td> <td>Class 1K3</td> </tr> <tr> <td>Temperature (extended)</td> <td>-32...50 °C</td> </tr> <tr> <td>Humidity, non-condensing</td> <td><95 % r.h.</td> </tr> </table>	Climatic conditions	Class 1K3	Temperature (extended)	-32...50 °C	Humidity, non-condensing	<95 % r.h.			
	Climatic conditions	Class 1K3							
	Temperature (extended)	-32...50 °C							
Humidity, non-condensing	<95 % r.h.								
Mechanical conditions	Class 2M2								

Standards, directives and approvals	
Product standards	EN 60730 Part 2-14: Particular requirements for electric actuators
Electromagnetic compatibility (field of use)	For residential, commercial, and industrial environments
EU conformity (CE)	A5W00000176 ²⁾
UK conformity (UKCA)	A5W00198019A ²⁾
RCM Conformity	A5W00000177 ²⁾
EAC compliance	Eurasian conformity
UL certification	UL per UL 60730 http://ul.com/database cUL as per CSA-C22.2 No. 24-93

Environmental compatibility
Environmental Declaration A5W00026066 ²⁾ contains data on environmental-compatible product design and assessment (RoHS compliance, compositions, packaging, environmental benefits and disposal).

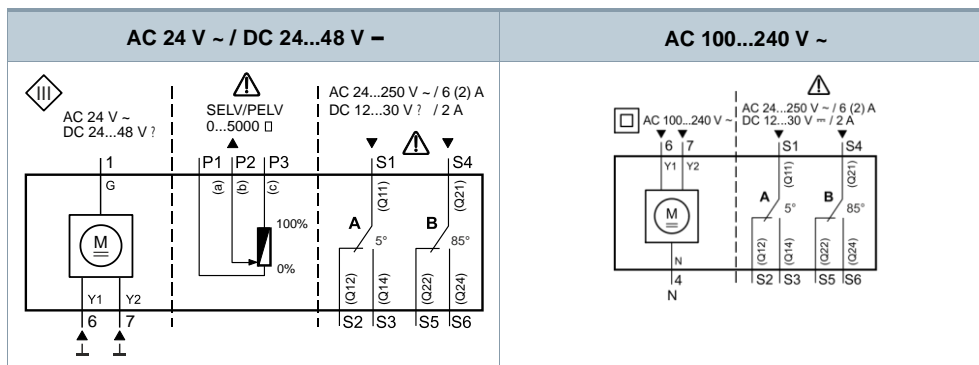
Dimensions and weight		
Actuator (W x H x D)		See Dimensions [▶ 12]
Damper shaft		
	Round	8...16 mm
	Round	8...10 mm (with insert)
	Square	6...12.8 mm
	Min. length	20 mm
	Max. shaft hardness	<300 AV
Weight (excluding packaging)	Without switch	Max. 0.49 kg
	With switch	Max. 0.63 kg

- 1) C-UL: Permissible only to DC 30 V =
- 2) The documents can be downloaded at <http://siemens.com/bt/download>.

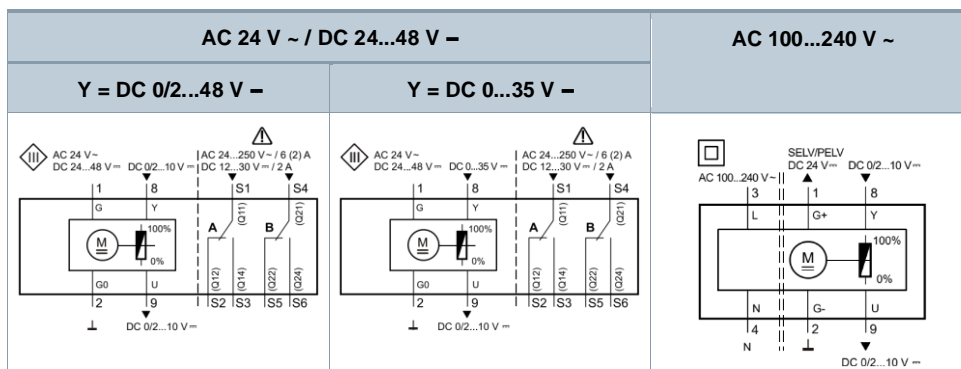
Connection diagrams

Internal diagrams

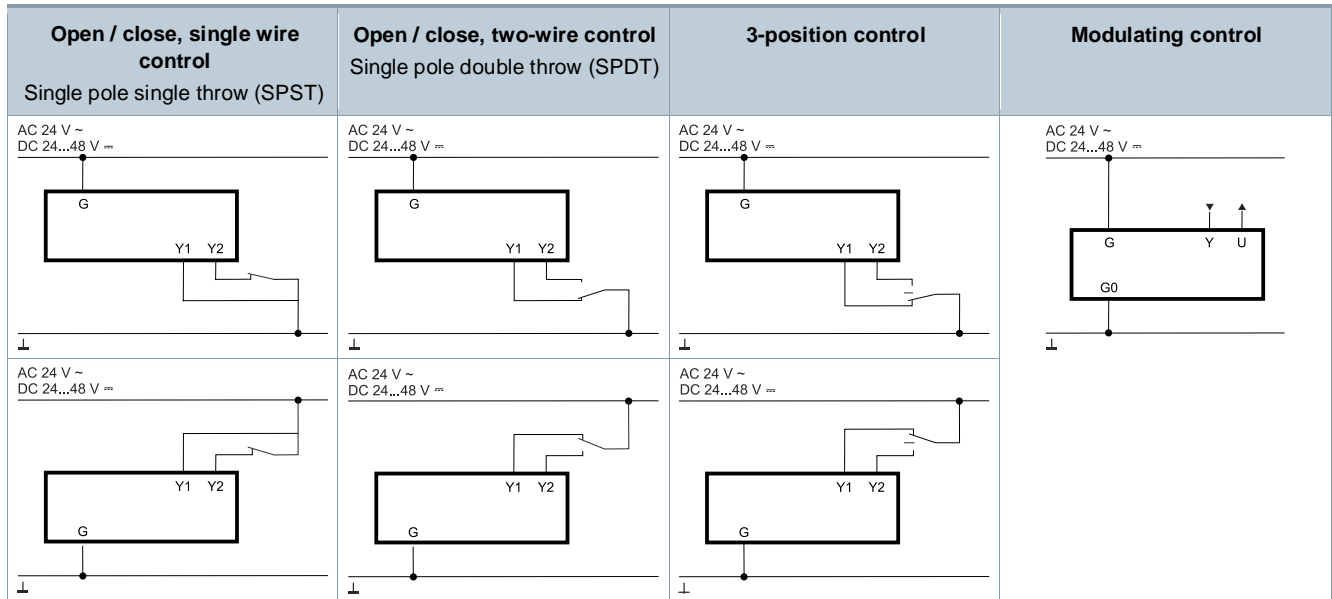
GLB14..1E, GLB34..1E: Open / close, 3-position control



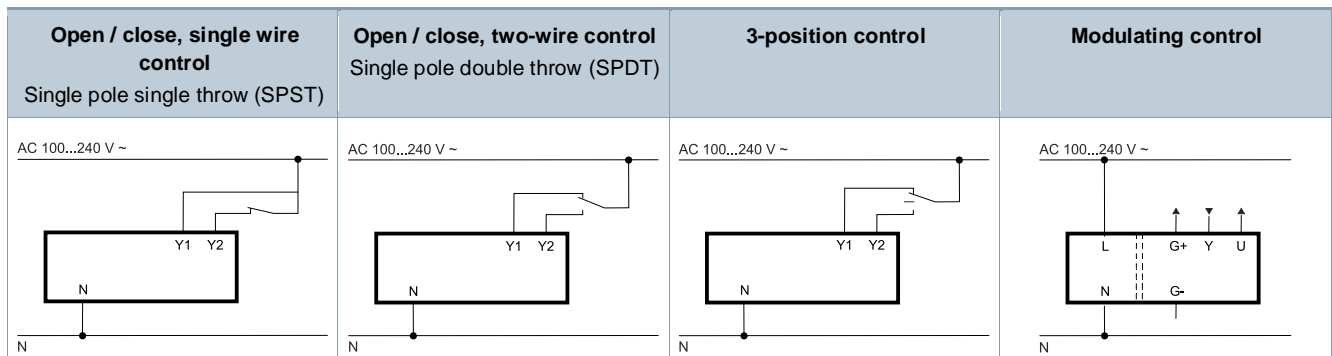
GLB16..1E, GLB36..1E: Modulating control



Control on GLB1..1E (AC 24 V ~ / DC 24...48 V –)



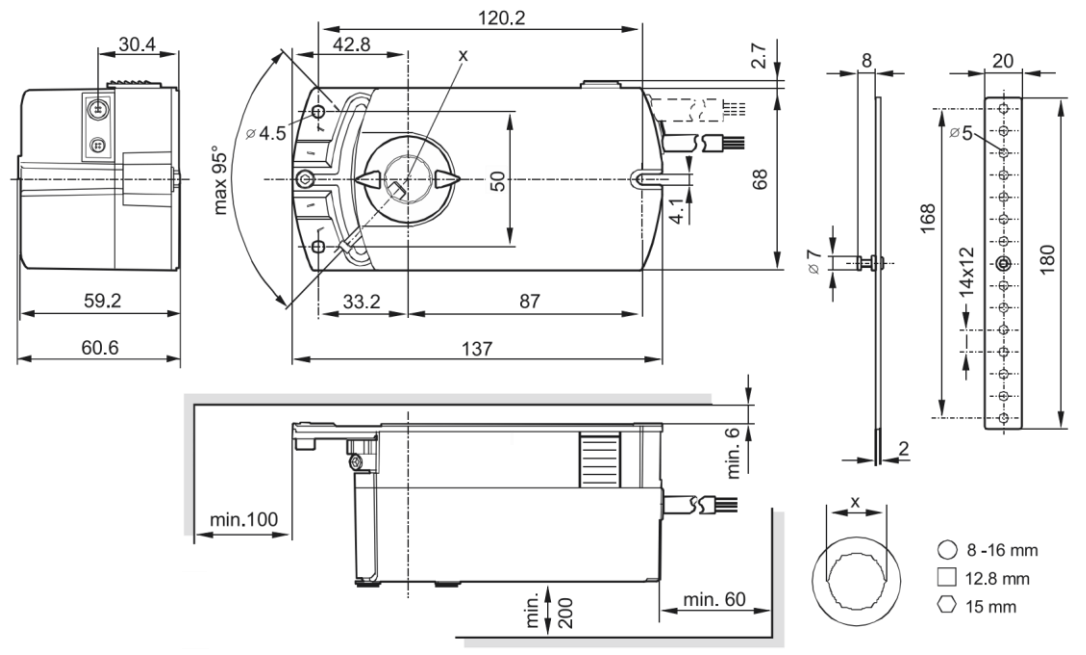
Control on GLB3..1E (AC 100...240 V ~)



Cable designations

Connecting thread	Code	No.	Color	Abbreviation	Meaning
Actuators AC 24 V ~ DC 24...48 V =	G	1	red	RD	System potential AC 24 V ~ / DC 24...48 V =
	G0	2	Black	BK	System neutral
	Y1	6	violet	VT	Positioning signal AC/DC 0 V "clockwise" GLB14..1E)
	Y2	7	orange	OG	Positioning signal AC/DC 0 V "counterclockwise" GLB14..1E)
	Y	8	Gray	GY	Signal input (GLB16..1E)
	U	9	pink	PK	Signal output (GLB16..1E)
Actuators AC 100...240 V ~	L	3	brown	BR	Phase, AC 100...240 V ~
	N	4	light blue	BU	Neutral conductor
	Y1	6	Black	BK	Positioning signal AC 100..240 V ~ "clockwise" GLB34..1E)
	Y2	7	white	WH	Positioning signal AC 100...240 V ~ "counterclockwise"GLB34..1E)
	G+	1	red	RD	System potential DC 24 V = (auxiliary power) (GLB36..1E)
	G-	2	Black	BK	System neutral (auxiliary power) (GLB36..1E)
	Y	8	Gray	GY	Signal input (GLB36..1E)
	U	9	pink	PK	Signal output (GLB36..1E)
Feedback potentiometer	a	P1	white/red	WH RD	Potentiometer 0...100 % (P1-P2)
	b	P2	white/blue	WH BU	Potentiometer pick-off
	c	P3	white/pink	WH PK	Potentiometer 100...0 % (P3-P2)
Auxiliary switch	Q11	S1	gray/red	GY RD	Switch A input
	Q12	S2	gray/blue	GY BU	Switch A Normally closed contact
	Q14	S3	gray/pink	GY PK	Switch A Normally open contact
	Q21	S4	black/red	BK RD	Switch B input
	Q22	S5	black/blue	BK BU	Switch B Normally closed contact
	Q24	S6	black/pink	BK PK	Switch B Normally open contact

Dimensions



Dimensions in mm

Revision numbers

Type	Valid from rev. no.		Type	Valid from rev. no.
GLB141.1E S55499-D192	..B		GLB164.1E S55499-D272	..B
GLB142.1E S55499-D193	..B		GLB166.1E S55499-D273	..B
GLB146.1E S55499-D194	..B		GLB341.1E S55499-D195	..B
GLB161.1E S55499-D270	..B		GLB346.1E S55499-D196	..B
GLB163.1E S55499-D271	..B		GLB361.1E S55499-D197	..B

Issued by
Siemens Switzerland Ltd
Smart Infrastructure
Global Headquarters
Theilerstrasse 1a
CH-6300 Zug
+41 58 724 2424
www.siemens.com/buildingtechnologies

© Siemens 2016
Technical specifications and availability subject to change without notice.

Document ID A6V10636202_en--_e
Edition 2024-06-27